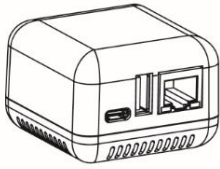


## Quick User Guide

### Print Server Accessories

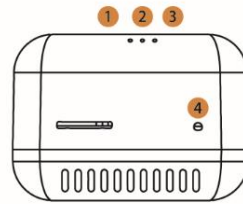
#### Standard Accessories



5V Power Adapter

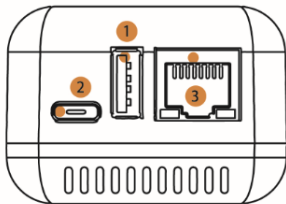
TYPE-C data cable

## 1 Status Indicator



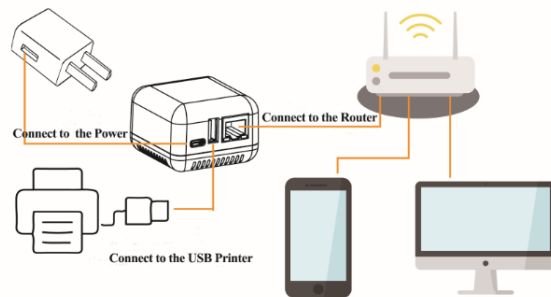
- 1. Power indicator
- 2. Expansion indicator
- 3. Status indicator
- 4. Reset button

## Interface Description



- 1 USB interface
- 2 Power/configuration interface
- 3 Ethernet interface

## 2 Work Flow

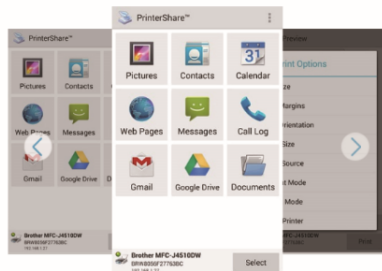


## 3 Download APP

Download the "PrinterShare" or "PrintHand" APP via Google Play or APP Store

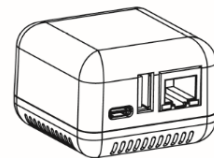


PrinterShare



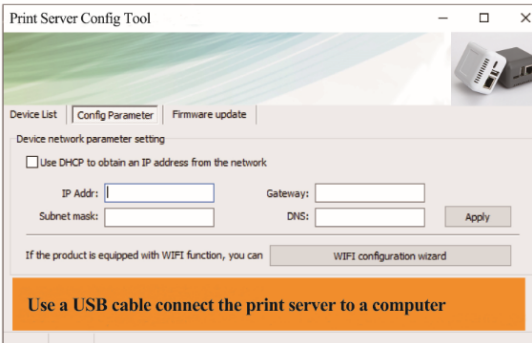
## 5 Bluetooth Connection

Use with Bluetooth-enabled devices



Name: Print Server  
Pin Code: 0000

## 4 Parameter Configuration



Use a USB cable connect the print server to a computer

## 6 Add A TCP/IP Port

SUPPORT WINDOWS DRIVER PRINTING

Windows98/WindowsXP/Windows7  
Windows8/Windows10



Add a standard TCP/IP port in the printer port  
Port number: 9100